

BLACKSTONE

ST.

95  
A-35

37

PLAIN

WILLARD ST.

STREET

BISHOP ST.

BOGMAN ST.

RHODES ST.

PUBLIC

ST

C. & P. 0.104 OFF

C. & P. 0.200 OFF

C. & F. 0.010 OFF

C. & P. 0.200 OFF

C. & P. 0.110 OFF

P. & T. 0.180 OFF

Cor. fence 0.220 OFF

Cor. fence 0.040 OFF

C. & P. 0.610 OFF

C. & F. 0.880 OFF

C. & F. 1.360 OFF

C. & P. 0.890 OFF

C. & P. 2.220 OFF

C. & P. 2.220 OFF

C. & F. 0.070 OFF

C. & S. 680 OFF

C. & S. 790 OFF

C. & S. 510 OFF

C. & S. 390 OFF

C. & F. 0.230 OFF

C. & F. 0.040 OFF

Rough line stone on off.

C. & S. 0.030 OFF

C. & F. 0.010 OFF

C. & P. 0.000 OFF

C. & S. 1.970 OFF

C. & F. 0.100 OFF

C. & S. 3.240 OFF

C. & S. 3.310 OFF

C. & F. 0.030 OFF

C. & S. 2.500 OFF

C. & S. 2.910 OFF

C. & S. 2.600 OFF

C. & S. 4.470 OFF

C. & F. 0.344 OFF

C. & S. 3.950 OFF

C. & F. 0.070 OFF

C. & S. 1.190 OFF

C. & S. 5.078 OFF

C. & F. 0.054 OFF

C. & P. 0.080 OFF

C. & P. 1.660 OFF

C. & P. 10.040 OFF

C. & P. 0.090 OFF

C. & P. 0.050 OFF

C. & S. 0.120 OFF

C. & S. 0.090 OFF

40.12

40.12

40.12

40.12

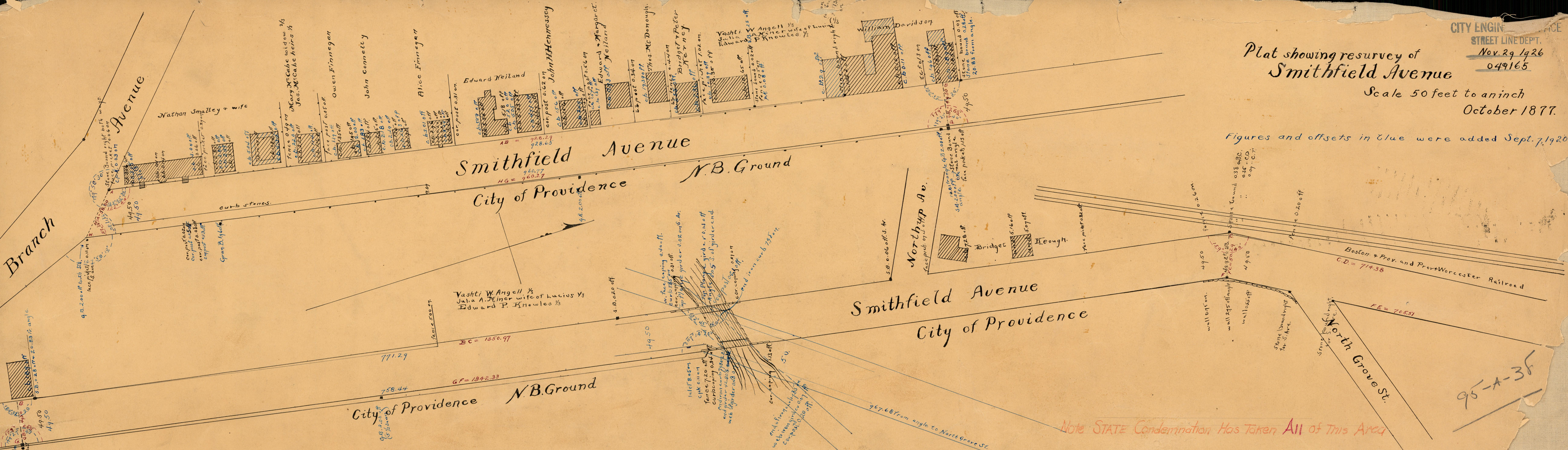


CITY ENGINEER  
STREET LINE DEPT.  
Nov. 29 1926  
049165

# Plat showing resurvey of Smithfield Avenue

Scale 50 feet to an inch  
October 1877.

Figures and offsets in blue were added Sept. 7, 1920.



Branch  
Smithfield Avenue

Smithfield Avenue  
City of Providence  
N.B. Ground

Smithfield Avenue  
City of Providence

City of Providence  
N.B. Ground

Note STATE Condemnation Has Taken All of This Area

95-A-38

OFFICE  
DRAW